

# 2020 TOXIC CALENDAR

## Firemen stand by as gas tank leaks

Warley firemen stood by for nearly four hours yesterday after a tank containing phosphine began to leak and the gas to ignite at the Oldbury Division of **Albright & Wilson Ltd.**

Four appliances from the brigade went to the premises in Trinity Street, Oldbury, after the fire was discovered. A spokesman for the firm last night said that the tank, which was in the open, was about 16 feet high and contained 500 cubic feet of the gas.

He said that a hole, through corrosion, had appeared at the top of the tank and the gas caught fire as soon as it came into contact with the air.

## January

Mo	Tu	We	Th	Fr	Sa	Su
		1	2	3	4	5
6	7	8	9	10	11	12
13	14	15	16	17	18	19
20	21	22	23	24	25	26
27	28	29	30	31		

3:○ 10:○ 17:○ 24:●



February						
Mo	Tu	We	Th	Fr	Sa	Su
					1	2
3	4	5	6	7	8	9
10	11	12	13	14	15	16
17	18	19	20	21	22	23
24	25	26	27	28	29	
2:●	9:○	15:●	23:●			



I can confirm everything said about this lagoon which at times was bright green. Rocks thrown in would cause small smelly explosions which were great fun for kids. Also next door to it was a area that contained an underground fire (hardly surprising) that I fell into while going for a brick to throw. I went in up to my waistline before I stoped going down. I thank God I hit something solid and managed to climb out. My wellies were smouldering. I did not realise who was responsible for dumping chemicals into the lagoon but some years later when I was a police panda car driver in the West Bromwich/Oldbury area. We regularly had lectures from the boffins at Albright and Wilson as to how to react if they had a major escape of chlorine gas from their Oldbury plant. I don't suppose I'm breaking any official secrets in saying this. Our police vehicles were actually equipped with gas masks! Basically the civilian population would have been helpless, the only advice was to tell people to stay in doors and shut their windows. There was no way that myself or other drivers were going to go into a huge chlorine gas escape, we had plans to go the other way, orders or no orders. This was all kept from the public. I have no idea if this arrangement is still current.



Wow · Reply · Message · 2h

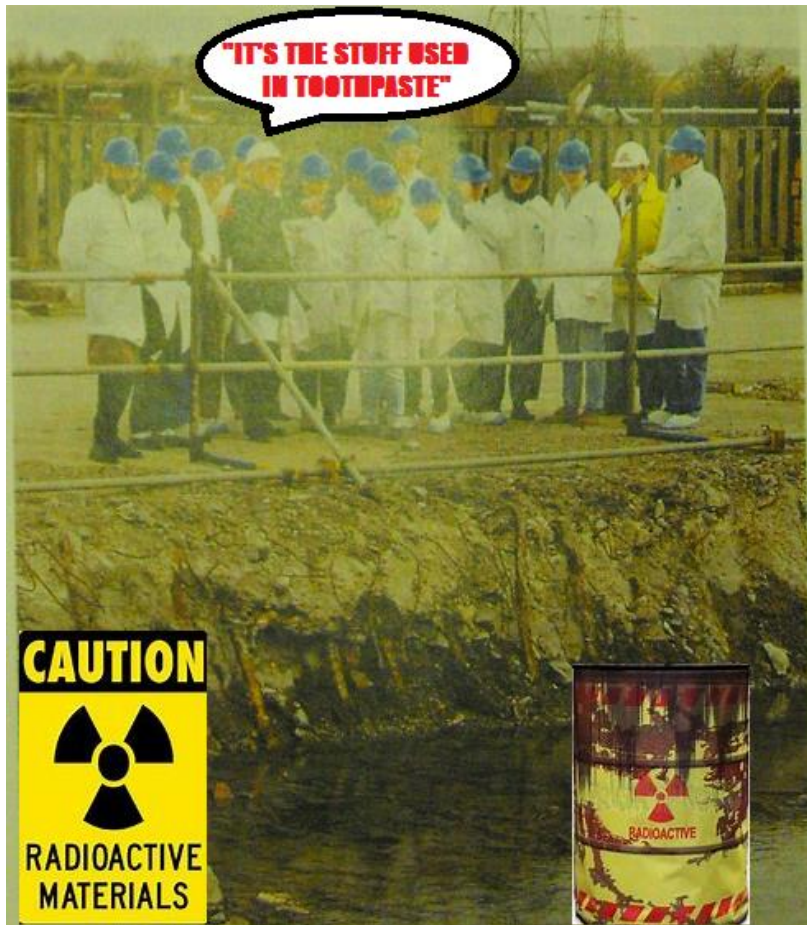


Write a reply...



## March

Mo	Tu	We	Th	Fr	Sa	Su
						1
2	3	4	5	6	7	8
9	10	11	12	13	14	15
16	17	18	19	20	21	22
23	24	25	26	27	28	29
30	31					
2:☉	9:☉	16:☉	24:☉			

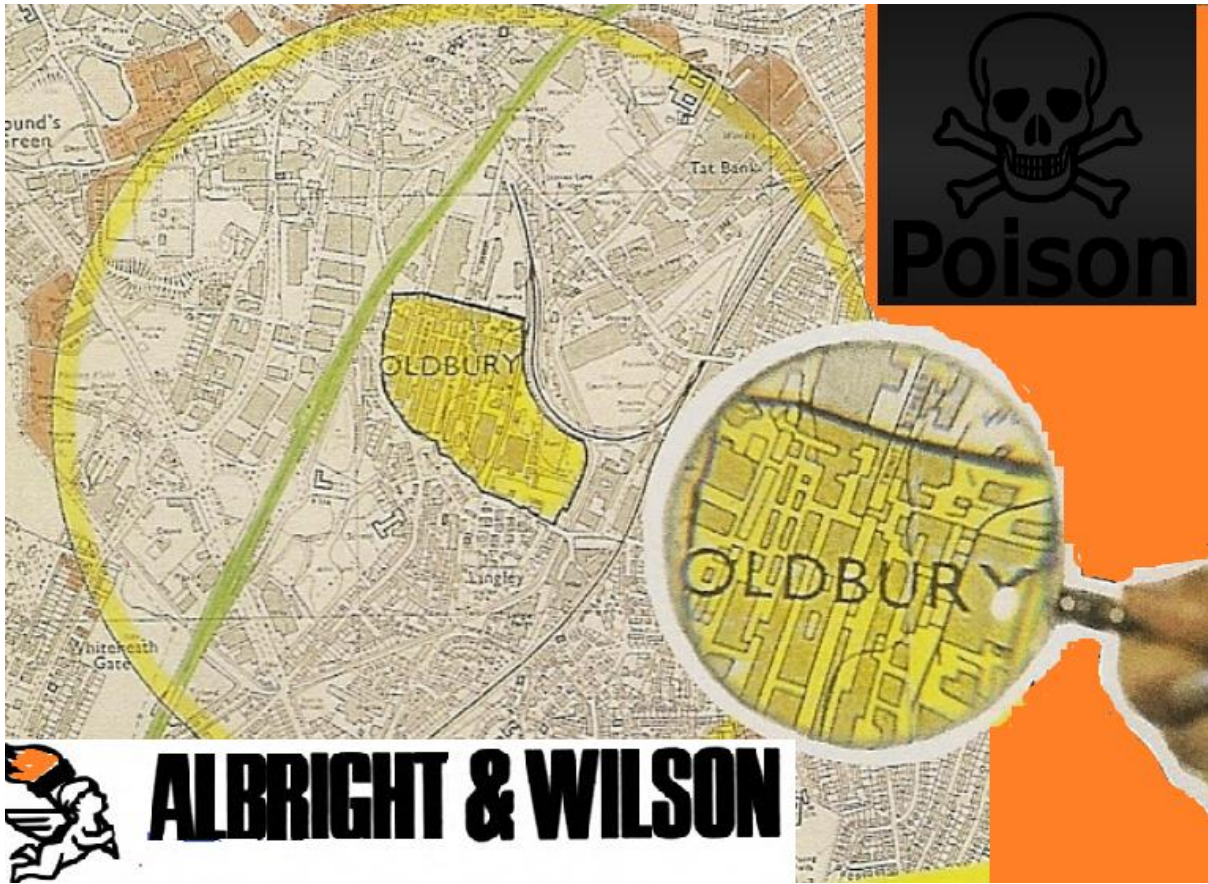


April						
Mo	Tu	We	Th	Fr	Sa	Su
		1	2	3	4	5
6	7	8	9	10	11	12
13	14	15	16	17	18	19
20	21	22	23	24	25	26
27	28	29	30			
1:☉	8:☉	14:☉	23:☿	30:☉		

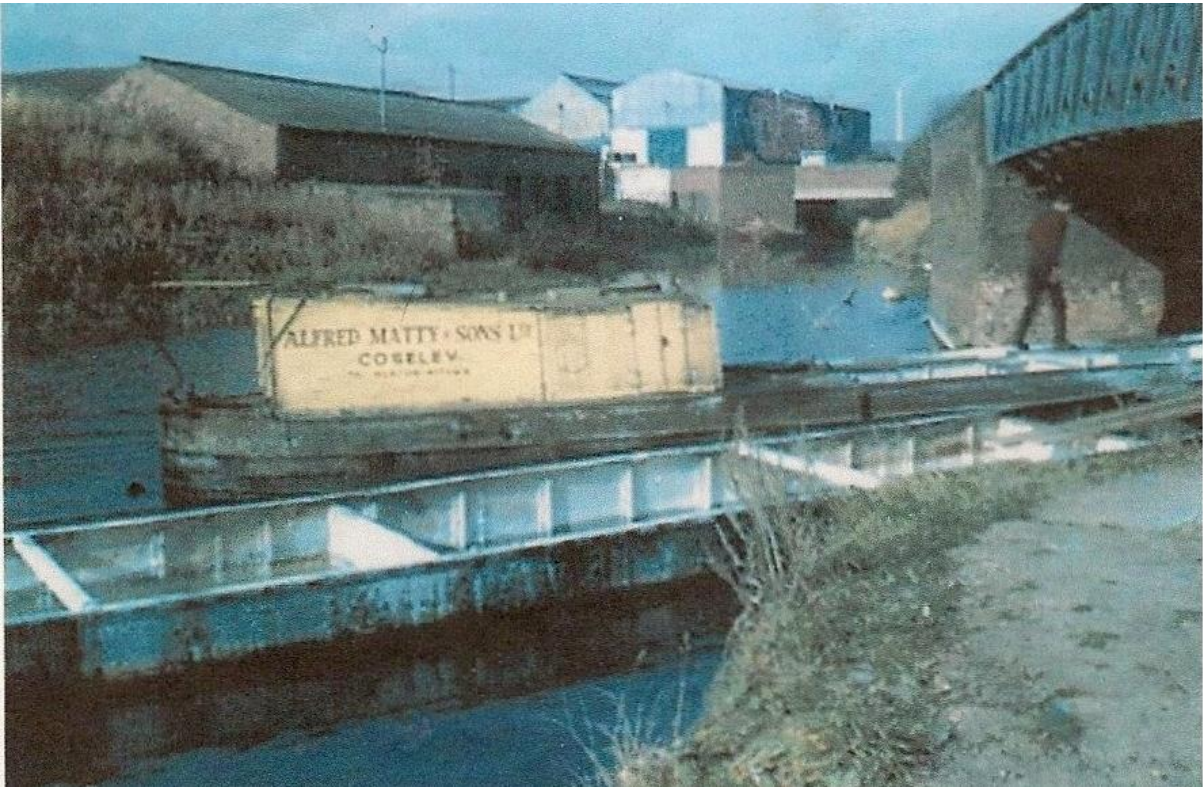


May						
Mo	Tu	We	Th	Fr	Sa	Su
				1	2	3
4	5	6	7	8	9	10
11	12	13	14	15	16	17
18	19	20	21	22	23	24
25	26	27	28	29	30	31
7:○	14:◐	22:●	30:◐			





June						
Mo	Tu	We	Th	Fr	Sa	Su
1	2	3	4	5	6	7
8	9	10	11	12	13	14
15	16	17	18	19	20	21
22	23	24	25	26	27	28
29	30					
5:○	13:●	21:●	28:●			



July

Mo	Tu	We	Th	Fr	Sa	Su
		1	2	3	4	5
6	7	8	9	10	11	12
13	14	15	16	17	18	19
20	21	22	23	24	25	26
27	28	29	30	31		

5:○ 13:◐ 20:● 27:◑



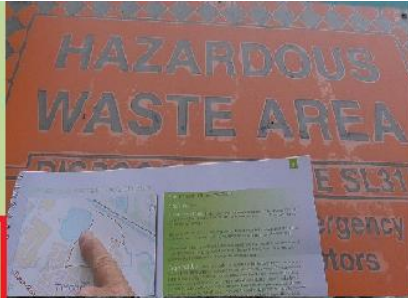
August						
Mo	Tu	We	Th	Fr	Sa	Su
					1	2
3	4	5	6	7	8	9
10	11	12	13	14	15	16
17	18	19	20	21	22	23
24	25	26	27	28	29	30
31						
3:○	11:●	19:●	25:●			



# SWOT Analysis

## Threats

- Inappropriate development
- Contaminated land/remediation costs
- Lack of interest/investment in investing in Dudley Port
- Weak/recovering housing market making developers more cautious
- Lack of gap funding to remediate Limestone mine housing allocation at Coneygre



**DANGER**  
Chemically treated water



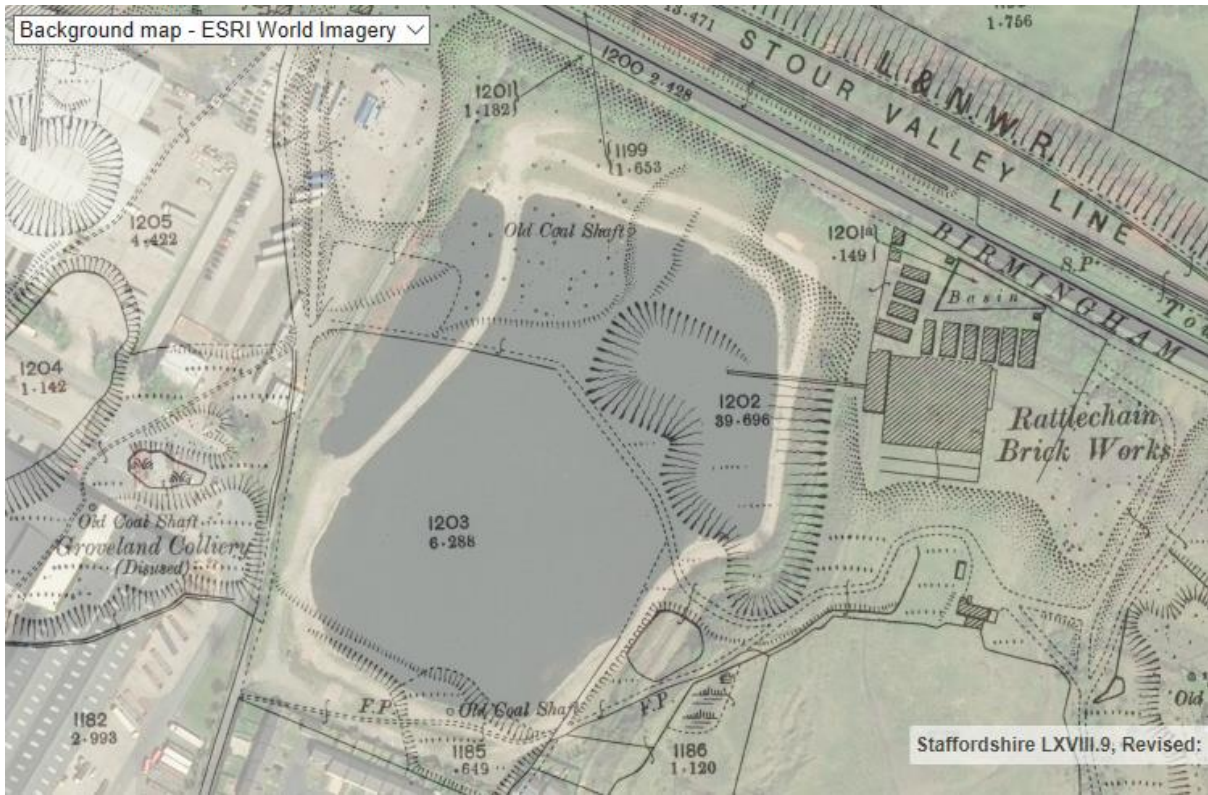
September						
Mo	Tu	We	Th	Fr	Sa	Su
	1	2	3	4	5	6
7	8	9	10	11	12	13
14	15	16	17	18	19	20
21	22	23	24	25	26	27
28	29	30				
2:0	10:0	17:0	24:0			



October						
Mo	Tu	We	Th	Fr	Sa	Su
			1	2	3	4
5	6	7	8	9	10	11
12	13	14	15	16	17	18
19	20	21	22	23	24	25
26	27	28	29	30	31	
1:○	10:●	16:●	23:●	31:○		



November						
Mo	Tu	We	Th	Fr	Sa	Su
						1
2	3	4	5	6	7	8
9	10	11	12	13	14	15
16	17	18	19	20	21	22
23	24	25	26	27	28	29
30						
8:●	15:●	22:●	30:○			



December						
Mo	Tu	We	Th	Fr	Sa	Su
	1	2	3	4	5	6
7	8	9	10	11	12	13
14	15	16	17	18	19	20
21	22	23	24	25	26	27
28	29	30	31			
8:○	14:●	21:○	30:○			

**IN THE EVENT OF AN EMERGENCY- YOU'RE SCREWED, CAUSE WE WON'T SOUND THE ALARM. #maskingmorethanchemistry**



